

7.



Fig. 1, Fig. 2: Ramade, L. (1890). *D'enseignes décoratives à l'usage des peintres*



Fig. 3, Fig. 4: Fleury, P. (1903). *Nouvel album de lettres peintes*

Fig. 1, Fig. 2: Ramade, L. (1890). *D'enseignes décoratives à l'usage des peintres* [Boek]. [vanhttps://archive.org/details/lafrance0002/ifa_france_0002_013.jpg](https://archive.org/details/lafrance0002/ifa_france_0002_013.jpg)

Fig. 3, Fig. 4: Fleury, P. (1903). *Nouvel album de lettres peintes* [Boek]. https://oa.letterformarchive.org/item?workID=ifa_france_0003&targPic=ifa_france_0003_015.jpg

Fig. 5 – Fig.8: Strong, C. J. (1917). *Strong's book of designs* [Boek]. <https://archive.org/details/strongbookofdes00stro/page/n115/mode/2up>

Fig. 9: Vinterberg, T. (1998). *Festen* [Film Still]. <https://assets.mubicdn.net/images/film/199/image-w856.jpg?itok=xoXmkaH&tamp=1581347866>

Fig. 10: Von Trier, L. (1998). *Idioterne* [Film Still]. <https://cinematek.be/en/screening/idioterne-lars-von-trier-1998-35mm-positive-color-da-fr-optical-combined-image-and-sound-polyester-114>

Fig. 11: Jans, L. (2022). *untitled* [2022].

Fig. 12: Brecht, G. (1962). *Flute solo from water yam* [Print]. https://www.moma.org/collection/works/156500?association=portfolios&page=1&parent_id=126322&sov_referrer=association

Fig. 13: Brecht, G. (1963a). *Candle-Piece for radios from water yam* [Print]. <https://www.moma.org/collection/works/156487>

Fig. 14: Brecht, G. (1963). *Water Yam* [Publicatie]. <https://www.moma.org/collection/works/126322>

Fig. 15: Ono, Y. (1964). *Grapefruit* [Boek]. <https://www.moma.org/collection/works/128103>

Fig. 16: Higgins, D. (1964–1974). *The great bear pamphlets* [Booklets]. <https://www.fondazionebonotto.org/en/collection/fluxus/higginsdick/2594.html>

Fig. 17: Maciunas, G. (1966). *FluxFest Sale* [Poster]. <https://walkerart.org/collections/artworks/fluxfest-sale>

Fig. 18: Maciunas, G. (1965–1966). *Fluxkit* [Publicatie]. https://www.moma.org/collection/works/126323?classifications=19&date_begin=Pre-1850&date_end=2022&include_uncataloged_works=1&q=fluxus&utf8=

Fig. 19: LeWitt, S. (2008). *Wall Drawing #260* [Muurtekening]. Museum of Modern Art, Manhattan, New York. <https://www.moma.org/calendar/exhibitions/305>

Fig. 20: Listasafn Reykjavíkur. (2020). [Foto]. <https://listasafnreykjavikur.is/sites/default/files/styles/slideshow760/public/frettir/2020/sollewit-vigfus-large.jpg?itok=xoXmkaH&tamp=1581347866>

Fig. 21: MASS MoCA. (z.d.). [Foto]. MASS MoCA. <https://massmoca.org/event/walldrawing51/>

Fig. 22: Briggs, C. (2009). *Heart Drawing Exercise* [Foto]. In *Taking a Line for a Walk: assignments in design education* (2de editie, p. 30).

Fig. 23: Doust, R. (1973). *Deface a symbol of our time* [Foto]. In *Taking a Line for a Walk: assignments in design education* (2de editie, p. 24).

Fig. 24: Spinat, D., Meehan, M. V., & Donnelly, N. (2011). *Classifieds* [Foto]. In *Taking a Line for a Walk: assignments in design education* (2de editie, p. 34).

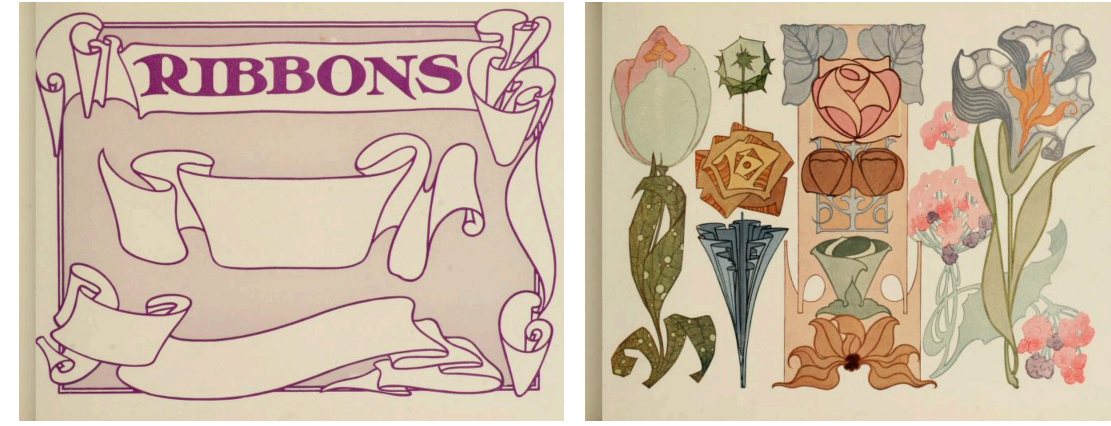
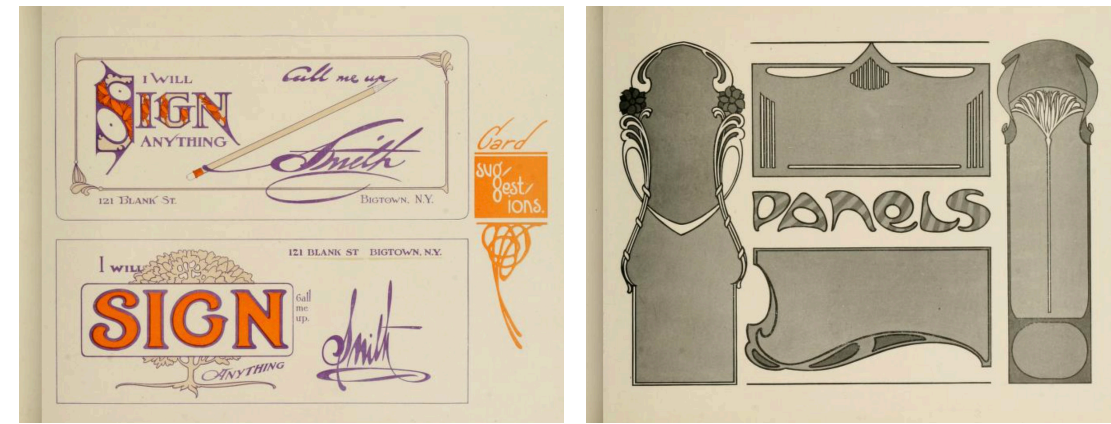


Fig. 5 - Fig. 8: Strong, C. J. (1917). *Strong's book of designs*



Fig. 9: Vinterberg, T. (1998). *Festen*



Fig. 10: Von Trier, L. (1998). *Idioterne*

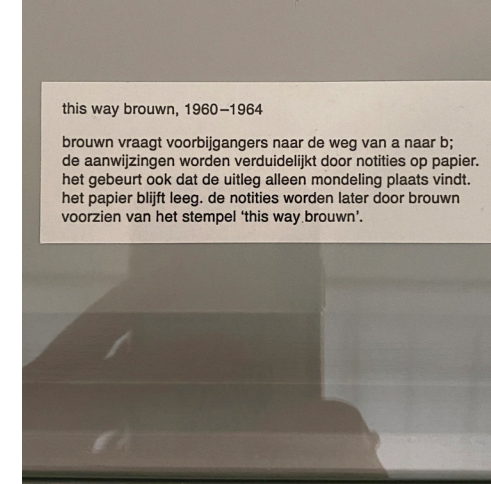


Fig. 11: Jans, L. (2022). *untitled*

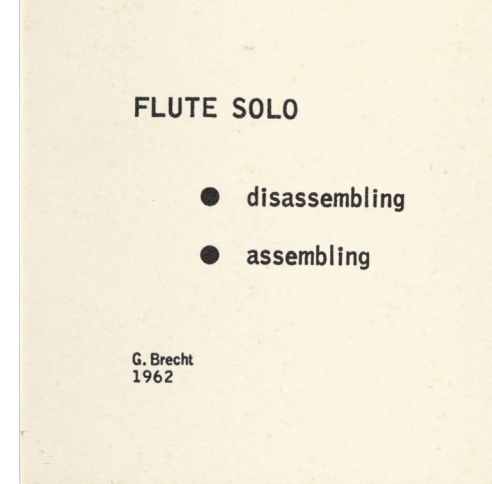


Fig. 12: Brecht, G. (1962). *Flute solo from water yam*

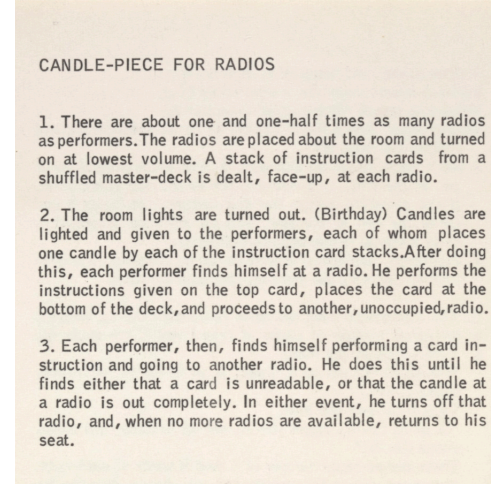


Fig. 13: Brecht, G. (1963a). *Candle-Piece for radios from water yam*



Fig. 14: Brecht, G. (1963). *Water Yam*

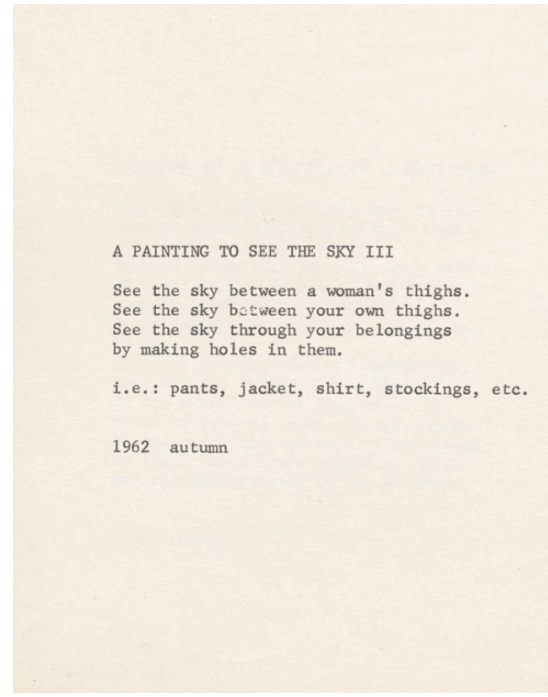


Fig. 15: Ono, Y. (1964). *Grapefruit*



Fig. 16: Higgins, D. (1964–1974). *The great bear pamphlets*



Fig. 17: Maciunas, G. (1966). *FluxFest Sale*



Fig. 18: Maciunas, G. (1965–1966). *Fluxkit*



Fig. 19: LeWitt, S. (2008). *Wall Drawing #260*



Fig. 20: Listasafn Reykjavíkur. (2020)



Fig. 21: MASS MoCA. (z.d.)

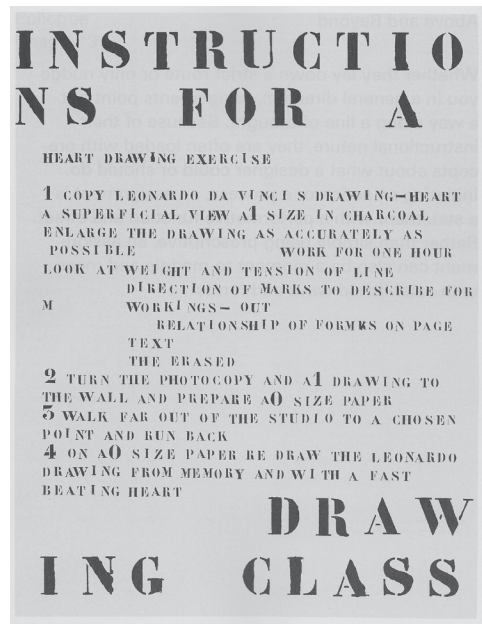


Fig. 22: Briggs, C. (2009). *Heart Drawing Exercise*

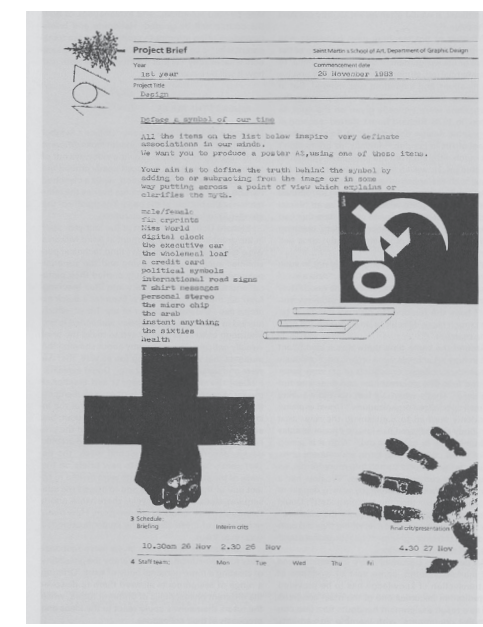


Fig. 23: Doust, R. (1973). *Deface a symbol of our time*



Fig. 24: Spinat, D., Meehan, M. V., & Donnelly, N. (2011). *Classifieds*

→ Vouw open alvorens het lezen van de scriptie aan te vatten. →